

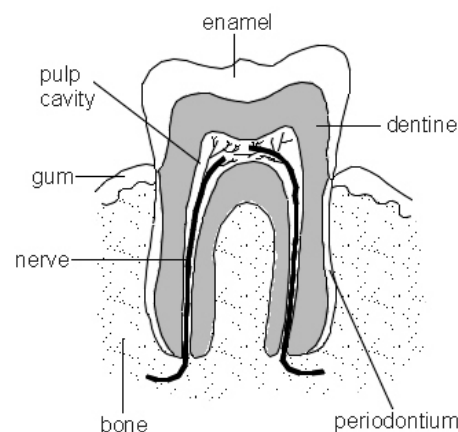


## Dental pain (toothache)

You have attended the Emergency Department because of toothache. This leaflet gives advice on next steps.

### What is causing my toothache?

Your toothache may be caused by cavities (tooth decay). Cavities expose the nerve of the tooth to air and hot or cold temperatures. It may come from an infection or abscess around your tooth. This causes the pain you are having.



### What is the treatment?

- If caused by an infection, it may be treated with antibiotics (medications which kill germs) and painkillers.
- You may take ibuprofen and paracetamol as needed for pain or fever (following dosage instructions on packets). In severe cases the Emergency Department may prescribe you additional painkillers.
- **Whether the toothache today is caused by infection or dental disease, you should see your dentist as soon as possible for further care.**

### Getting further treatment

The examination and treatment you received today has been provided on an emergency basis only. **This is not a substitute for complete medical or dental care.** If your problem worsens or new symptoms appear, and you are unable to meet with your dentist, call or return to your nearest Emergency Department.

If you require urgent treatment, please contact your usual dental practice as they may be able to see you or direct you to an urgent care dental service. If you do not have a regular dentist, [contact NHS 111](#) for advice on where you can get urgent care.

### What to look out for

Seek immediate medical attention if you develop any of the following symptoms:

- You develop a fever over 102°F (38°C).
- You develop redness and swelling of your face, jaw, or neck.
- You are unable to open your mouth.
- You have severe pain uncontrolled by pain medicine.

## **Tell us your views**

If you wish to discuss any aspect of your treatment and care, please speak to a senior member of staff or to the nurse looking after you. The matrons are also available during normal working hours and they welcome your views.

## **Friends and Family Test**

Whatever your experience you can give feedback by answering the Friends & Family test question – ‘Overall, how was your experience of our service?’ – by going online [www.royalberkshire.nhs.uk/get-in-touch/friends-and-family-survey.htm](http://www.royalberkshire.nhs.uk/get-in-touch/friends-and-family-survey.htm).

Based upon information from ExitCare® Patient Information ©2008 ExitCare, LLC.

To find out more about our Trust visit [www.royalberkshire.nhs.uk](http://www.royalberkshire.nhs.uk)

**Please ask if you need this information in another language or format.**

RBFT Emergency Department.

Reviewed: December 2023

Next review due: December 2025